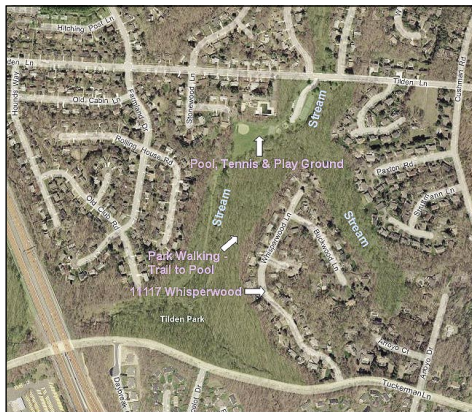


# MASTERPIECE AMIDST NATURE



11117 WHISPERWOOD LANE  
BETHESDA N., MD 20852  
\$999,000



[www.shmulcorp.com/whisperwood](http://www.shmulcorp.com/whisperwood)



LEADING REAL ESTATE  
COMPANIES OF THE WORLD™

**Llewellyn**  
REALTORS®

©2006 Llewellyn, Realtors®

Serving Maryland With Integrity Since 1959



*W*elcome to this masterpiece home! Located in the sought-after neighborhood of Luxmanor on almost half an acre, this home is surrounded by trees, streams, walking trails, recreation and nature—yet is close to commuter routes (I-270, I-495, Old Georgetown Road), shopping centers (Montgomery Mall, White Flint Mall), Metro, places of worship and well-known public schools (Luxmanor Elementary, Tilden Middle and Walter Johnson High).



*Welcome!*





*This six bedroom, three-and-a-half bath home with two-car garage and in-ground pool was recently renovated by a "Dream Team" who turned this place into a stunning success! Among the breathtaking features you'll find:*

- ✿ Five large skylights with internal dimmable light fixtures filling the house with light and giving a feeling of flow and height
- ✿ Plenty of light fixtures all over the house including "shell" lights, track lights and recessed lights
- ✿ Professionally refinished hardwood floors with three coats of high-gloss polyurethane in the living room, dining room and upper level
- ✿ New carpeting in the family room, basement bedroom and basement library/study
- ✿ Fully finished basement with full bath, large bedroom/study, recreation room, wet bar and laundry/utility room
- ✿ Newly remodeled baths with new ceramic tile walls and flooring, new furniture, accessories, faucets and light fixtures
- ✿ Main level bedroom or study with built-in cedar bookcases
- ✿ Spacious foyer with ceramic tile floor and new light fixtures leading to the family room, living room, powder room and basement
- ✿ All-new, top-of-the-line appliances including stainless steel kitchen appliances and washer and dryer
- ✿ New "Shiva Kashi" granite kitchen and hall bath countertops
- ✿ Gorgeous, large in-ground swimming pool with diving board, safety cover, and flagstone deck
- ✿ Beautiful botanic garden with fenced in backyard and many beautiful spots for relaxation
- ✿ Repaved large driveway with two brick lampposts
- ✿ Freshly painted (concrete and walls) attached two-car garage with access both to the backyard and the family room
- ✿ Fresh paint throughout the house, done by professionals with top quality materials and paint



11117 WHISPERWOOD LANE  
BETHESDA N., MD 20852  
\$999,000

REAL ESTATE TAXES: \$4,350 YEARLY  
YEAR BUILT: 1964  
LOT SIZE: 18,936 SQ. FT. (0.43 ACRE)  
SCHOOLS: LUXMANOR ELEMENTARY SCHOOL  
TILDEN MIDDLE SCHOOL  
WALTER JOHNSON HIGH SCHOOL



For more information, call:

**NIMROD SHMUL AND TEAM**  
OFFICE: 301.424.0900 x208  
DIRECT: 301.529.8221  
WEB: WWW.SHMULCORP.COM

You are invited to visit this beautiful house website at:  
[www.shmulcorp.com/whisperwood](http://www.shmulcorp.com/whisperwood)

**Llewellyn**  
REALTORS®

Serving Maryland With Integrity Since 1959



LEADING REAL ESTATE  
COMPANIES OF THE WORLD™

Information deemed reliable but not guaranteed.