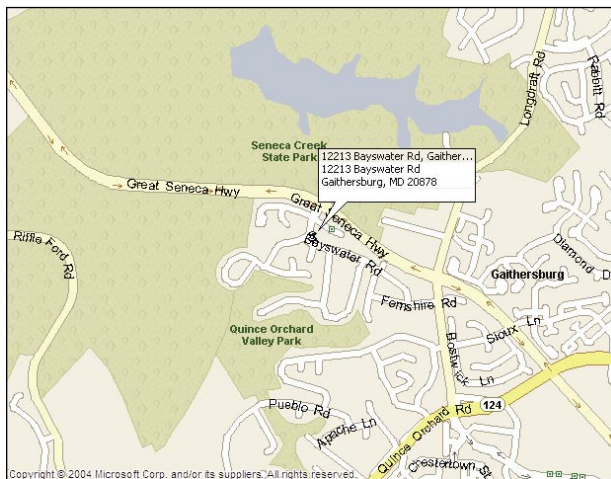


QUINCE ORCHARD COLONIAL



12213 BAYSWATER ROAD
GAITHERSBURG, MD 20878
\$680,000



www.shmulcorp.com/bayswater



*W*elcome to this fabulous colonial located in the sought-after Quince Orchard Valley neighborhood. Enjoy a two-story foyer, shiny hardwood floors, beautiful custom molding, and a spacious master suite with sitting room, bath with Jacuzzi tub and skylight above. There's also a family room with wood-burning fireplace and large bay window overlooking the gorgeous landscaping. On the bedroom level you'll find three additional bedrooms and a hall bath. The lower level features a spacious recreation room, den/guest room and extra large storage area. This home is conveniently located minutes from Kentland's huge shopping/dining/entertainment area, commuter routes (Route 28, I-270), Seneca Creek State Park, South Germantown Recreational Park and places of worship. *Enjoy!*



MAIN LEVEL

- ✿ Two-story foyer with chandelier and large windows
- ✿ Living room with hardwood floor and custom molding
- ✿ Dining room with hardwood floor and custom molding
- ✿ Eat-in kitchen with table space and a bar
- ✿ Family room off the kitchen with large bay window and wood-burning fireplace with marble mantel
- ✿ Two-car garage with fresh concrete paint and automatic door openers



Welcome!



UPPER LEVEL

- ✿ Enormous master suite with sitting room, spa like bath with three sinks, Jacuzzi tub with skylight and two dormers
- ✿ Three additional spacious bedrooms
- ✿ Updated hall bath

LOWER LEVEL

- ✿ Good-sized recreation room
- ✿ Guest/bedroom
- ✿ Large storage and utility room



12213 BAYSWATER ROAD
 GAITHERSBURG, MD 20878
 \$680,000

REAL ESTATE TAXES: \$6,378 YEARLY
 YEAR BUILT: 1987
 LOT SIZE: 11,398 SQ. FT. (0.26 ACRE)



SPECIAL FEATURES

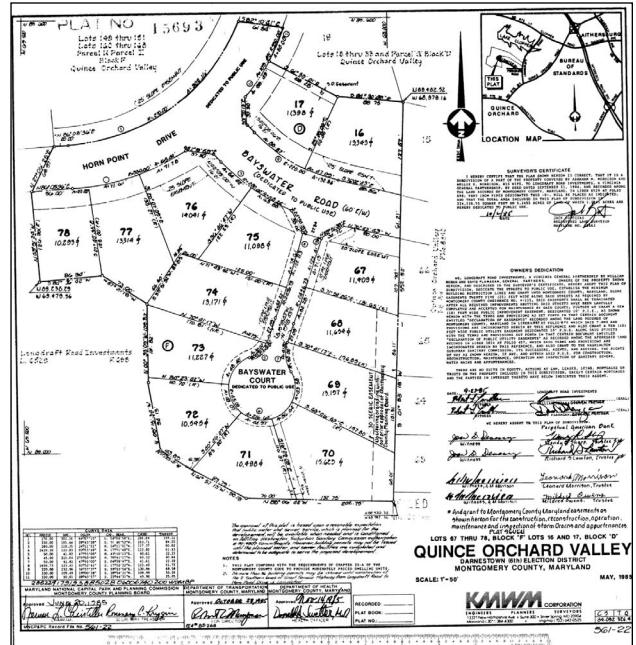
- * Central vacuum system
- * Intercom
- * All carpets were just steam cleaned
- * Shiny hardwood floors
- * Fresh exterior paint
- * Beautiful landscaping
- * New fence in the backyard
- * Spa-like master bath
- * Formal dining and living rooms
- * Two-story foyer
- * Custom molding throughout
- * Spacious recreation room
- * Large storage area

SCHOOLS

- * Thurgood Marshall Elementary School
- * Ridgeview Middle School
- * Quince Orchard High School

You are invited to visit this beautiful house website at:
www.shmulcorp.com/bayswater

Information deemed reliable but not guaranteed.



For more information, call:

NIMROD SHMUL AND TEAM
 OFFICE: 301.424.0900 x208
 DIRECT: 301.529.8221
 WEB: WWW.SHMULCORP.COM



Serving Maryland With Integrity Since 1959

LEADING REAL ESTATE COMPANIES OF THE WORLD™